



The Christ Candle February 2024

Inside This Issue

Birthdays / Upcoming Events
News / Information
Church Council / Finance
Calendar / Worship
Assistant Schedule



CLC Staff

The Reverend Dale M. Zylstra
Kelly Seitzinger - Secretary
Abigayle Kubiak - Organist

Congregation Council Officers

Nancy Zimmerman - President
Don Winston - Vice-President
Jan Kopischke - Secretary
Kelly Seitzinger - Treasurer
Dara Kubiak - Financial Secretary

Council Members

Mike Vidimos Bob Talley
Dave Holeman Shirley Whitesell
Elden LaHayne Robin Bellamy
Art Cinnovski

Ministry Team Leaders

Worship & Music Director—
Jan Kopischke
Choir Director—Lori Zylstra
JuBellation Director—Judy Rodgers
Genesis Bells Director—
Jan Kopischke

Fellowship - Esther Fuehrer
Finance/Stewardship -
Social Outreach- Julie Vidimos
Property - Don Winston
Christian Ed - Robin Bellamy
SCS Superintendent - Kelly Seitzinger
Visitation - Rosemary Wignall
Worship & Music - Judy Rodgers
Youth Ministry - Robin Bellamy

**All meetings are open to members
of the congregation.
Scheduled meetings are sometimes
adjusted based upon the ministry
team members schedules.

CHRIST LUTHERAN CHURCH

~ An E.L.C.A. Congregation ~

**7051 Indianapolis Blvd,
Hammond, IN 46324**

The Reverend Dale M. Zylstra

**The Reverend James T. Swanson,
Pastor Emeritus**

Phone: (219) 844-6122

Website: clchammond.com

Office Email: office.clch@gmail.com

Pastor's Email: pastor.clch@gmail.com



Mark Your Calendar Dates to Remember!

- Feb 13 - Shrove Tuesday Pancake Dinner
- Feb 14 - Ash Wednesday (10:30am & 7pm)
- Feb 21 - Lenten Midweek Services Begin
- Mar 20 - Lenten Midweek Services End
- Mar 24 - Palm Sunday
- Mar 28 - Maundy Thursday (7pm)
- Mar 29 - Good Friday Tenebrae (7pm)
- Mar 30 - Easter Vigil (7pm)
- Mar 31 - Easter Breakfast (8:00-10am)
Easter Sunday Worship (10:30am)
Easter Egg Hunt following Worship

Men's Group - Feb 5th

Men's Group with Dave Roman meets at 7pm in Byquist Hall.



YOUTH GROUP

For 6th - 12th Graders

Feb 3rd—4-7pm Soup-er Bowl
Feb 24th 7pm—25th 7pm 24 Hour Lock In

Please Bring Your Friends!!

If you need a ride please call, we will get you there!



Please see Robin Bellamy for more information.

Estuary Group - Feb 7th

Estuary Group with Pastor Dale meets the 1st Wednesday of every month at 7pm in Byquist Hall.

Sign up at: <https://www.meetup.com/nw-indiana-estuary-meetup-group/>

Check out our website.

Visit us at:
clchammond.com



Go to YouTube.com and Search:

Christ Lutheran
Hammond IN



Find me on

facebook

If we haven't found you yet...check us out on Facebook!!!

Search: Christ Lutheran Church Hammond



It's Soup-er Bowl time!



**Come support our youth!
Taste different soups, stews and chilis, and vote for your
favorite!**

\$7 Adults

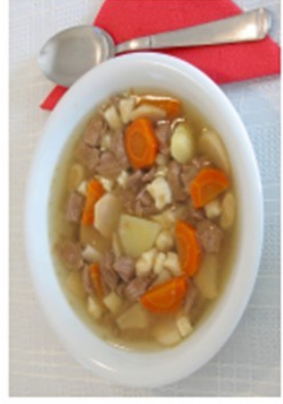
\$5 children 5-12

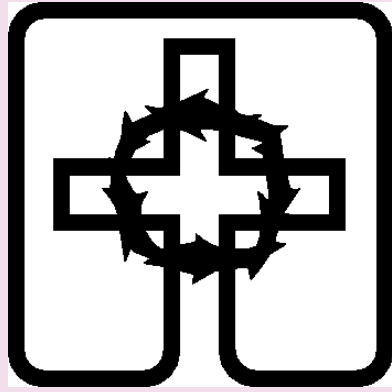
Children under 5 FREE

Saturday, February 3 4-7pm

(Extra votes for sale – 1 for \$1 or 7 for \$5)

Baked goods also for sale





+ The Season of Lent +

For Lutherans the 40-day season of Lent is an important one. Though the Scriptures do not mention Lent, it has a longstanding tradition in the Church. It began very simply as a time of preparation for Easter. The earliest reference to a 40 day fast leading up to Easter is the Second Festal letter of Athanasius in 330 A.D. Today Lent begins on Ash Wednesday and ends on Holy Saturday (Sundays are excluded to preserve the number 40). For Christians living in the Fourth Century, Lent had two major emphases: (1) It was seen as a time of repentance and denial of self. All Christians were to examine their lives according to the Ten Commandments and other Christian ethical precepts and repent where necessary. They were to remember what it cost their Savior to save them; (2) it was a time of instruction and preparation for the catechumens who wanted to become members of the Christian Church.

At the time of the Reformation, some Christians wanted to eliminate Lent since Scripture didn't command it. Luther urged that it be kept, for he saw Lent as an opportunity for the strengthening of faith. Luther tells us that Lent should be preserved, in part, because it reminded Christians of the Passion (Suffering and Death) of Jesus and encouraged them to meditate upon it. However, no one should be forced to participate. It should be voluntary.

So we also retain Lent to this day, because we see it as a salutary outward discipline that gives Christians a wonderful opportunity for spiritual renewal. Our observance of Lent combines many of the above features. Through our midweek and Sunday services, our Bible studies, and Lenten devotional materials, we come face to face with whatever sin may be hindering our walk with Christ. But most profoundly, we come face to face with the Gospel of Jesus which forgives and removes that sin and gives us the power to live anew.

10:30AM Lenten Midweek Worship **“Guided to the Cross”**

Is a special series of Mid-Week Lay Leader Services
for the season of Lent.

Beginning on Wednesday, February 21 - March 20 in Byquist.

(Soup to follow)

7PM Lenten Midweek Worship - “Holden Evening Prayer”

Mid-Week Services Each Wednesday evening in Lent
“Holden Evening Prayer” by Marty Haugen

Beginning on Wednesday, February 21 - March 20 in the Sanctuary

SERVICES FOR LENT

GUIDED

to the

CROSS



Ash Wednesday

GUIDED TO FORGIVENESS



Week 1

GUIDED TO HOPE



Week 2

GUIDED TO LOVE



Week 3

GUIDED TO PEACE



Week 4

GUIDED TO TRUST



Week 5

GUIDED TO PERSEVERANCE

*For the word of the cross is folly to those who are perishing,
but to us who are being saved it is the power of God.*

1 Corinthians 1:18

SERVICES FOR LENT

GUIDED

to the

CROSS

Throughout this holy time, we are drawn to Calvary to live in forgiveness, hope, love, peace, trust and perseverance. Each week, the services in this series reveal how Christ and his cross serve as examples for us of how to live our lives for and through our crucified Lord and Savior.

ASH WEDNESDAY

Guided to Forgiveness • Colossians 1:13-14 • When we confess our sins, we find forgiveness in the cross of Christ and are empowered to forgive others.

WEEK ONE

Guided to Hope • 2 Corinthians 1:10 • When we are uncertain about what the future holds, we discover in the cross the sure hope of heaven.

WEEK TWO

Guided to Love • 1 Timothy 1:13-14 • When we are separated from others and from God by our sin, the cross brings us together through its love.

WEEK THREE

Guided to Peace • Colossians 1:19-20 • With wars waging within and without, the cross settles them all with peace to body, mind and soul.

WEEK FOUR

Guided to Trust • 1 Timothy 1:15 • Plagued by doubt and competing voices, we turn to the cross to put our trust fully in the salvation won for us there.

WEEK FIVE

Guided to Perseverance • Ephesians 6:18 • When we are faced with hardship, we look to Christ on the cross who endured to the end so that we might carry on.



February

Sun	Mon	Tue	Wed	Thu	Fri	Sat
28 Epiphany 4 9:00am SCS 10:30am Worship 12:30pm Annual Meeting	29	30	31	1 6:15pm Genesis 7:00pm JuBellation 8:00pm Choir	2	3 4-7pm Youth Group Soup-er Bowl
4 Epiphany 5 9:00am SCS & Adult Ed 10:30am Worship 12:30pm W&M Mtg.	5 7:00pm Men's Group	6	7 7:00pm Estuary Group	8 6:15pm Genesis 7:00pm JuBellation 8:00pm Choir	9	10
11 Transfiguration 9:00am SCS & Adult Ed 10:30am Worship	12 7:00pm Council	13 6-8pm Shrove Tuesday Pancake Supper	14 10:30am & 7pm Ash Wednesday Worship	15 6:15pm Genesis 7:00pm JuBellation 8:00pm Choir	16	17 Hall Rental
18 Lent 1 9:00am SCS & Adult Ed 10:30am Worship 12:30pm Christian Ed. Mtg.	19	20	21 10:30am & 7pm Midweek Lenten Worship	22 6:15pm Genesis 7:00pm JuBellation 8:00pm Choir	23	24 7pm Youth Group 24 Hour Lock In
25 Lent 2 9:00am SCS & Adult Ed 10:30am Worship	26	27	28 10:30am & 7pm Midweek Lenten Worship	29 6:15pm Genesis 7:00pm JuBellation 8:00pm Choir	1	2

Date	Lector	Asst. Minister	Comm. Assist.	Cantor	Acolyte	Altar Guild	Fellowship	Greeter
2/4	Dave Roman		N/A			Dara Kubiak	Art Cimnovski	N/A
2/11	Sylvia Ellman		N/A			Denae DeCrescenzo	Bob Talley	N/A
2/14 10:30a			N/A			Leann Wilczewski	N/A	N/A
2/14 7:00p	John Juranovich		N/A			Karyn Fentress	N/A	N/A
2/18	Madison Stephens	Jan Kopischke	N/A		Kennedy Stephens	Pam Wimberly	Robin Bellamy	N/A
2/25	Sylvia Ellman					Darcy Winston	Jan Kopischke	N/A

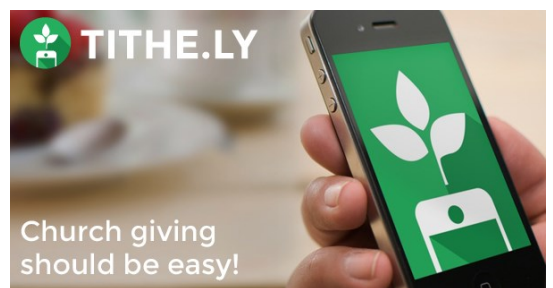
Highland Community Band Spring Concert

Thursday March 21, 2024 at 7:00 p.m.

Come join us for a free performance by the Highland Community Band!
 We have several members that play in the band!
 Performance will be held at Highland Highschool.

Christ Lutheran is signed up for online giving.

You can still give your offering in the plate at church or by mail, this is just another way to give. Simply go to Tithe.ly website or download the app and set up an account. It walks you through a few simple steps and your ready to go!



CLC MISSION STATEMENT

SHARING God's love by
LIVING our faith and
SERVING the world.